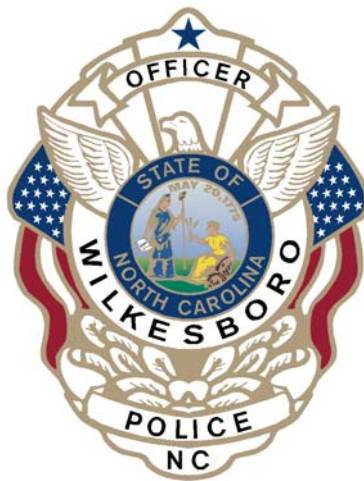


***Wilkesboro***  
***Police Department***  
***2015***  
***Annual Report***



# **Table of Contents**

## ***Letter from Chief of Police***

## ***Agency***

- I.     *Mission Statement***
- II.    *Organizational Chart***
- III.   *Accreditation***
- IV.    *Retirement***
- V.     *Promotions***
- VI.    *New Employee***
- VII.   *Patrol Operations Division***
- VIII.   *Support Operations Division***

## ***Annual Review and Analysis***

- I.     *Response to Aggression***
- II.    *Internal Affairs/Complaints***
- III.   *Vehicle Pursuits***

## ***Performance Reports***

- I.     *Crime Index***
- II.    *Non-Index Crimes***
- III.   *Traffic Data***
- IV.    *Drug Summary***
- V.     *Arrest Data***
- VI.    *Department Training***
- VII.   *Community Service***

**Message from the Chief of Police,  
Craig Garriss**



*Welcome to the Wilkesboro Police Department,*

*I invite you to learn more about us by reviewing our Annual Report, telephoning us, or visiting us in person or online. The men and women of our department take great pride in serving this beautiful historic community.*

*I am honored to serve the residents of the Town of Wilkesboro as your Chief of Police. I am also proud to support the accomplishments and fine work of the men and women of this department that continually provide quality service each and every day, to provide you with the best policing services available.*

*Allow me to extend my personal appreciation to our fine citizens, local officials, and the officers and employees of the Wilkesboro Police Department for their gracious support of me and the professional law enforcement services we provide.*

*It is my goal our officers work each and every day to strive for the Responsibility of Service and Leadership with Integrity and Conviction.*

*Sincerely,*

*Craig Garriss*

## **Mission Statement of the Wilkesboro Police Department**

The mission of the men and women of the Wilkesboro Police Department is to strive for the impartial enforcement of state and local laws to foster the peaceful environment of our citizens. We will establish community partnerships by providing proactive police services aimed at crime reduction and the protection of life and property. By ethical interactions with those we serve, we will garner the mutual respect that provides the cornerstone of trust our citizens deserve.

## **Law Enforcement Code of Ethics**

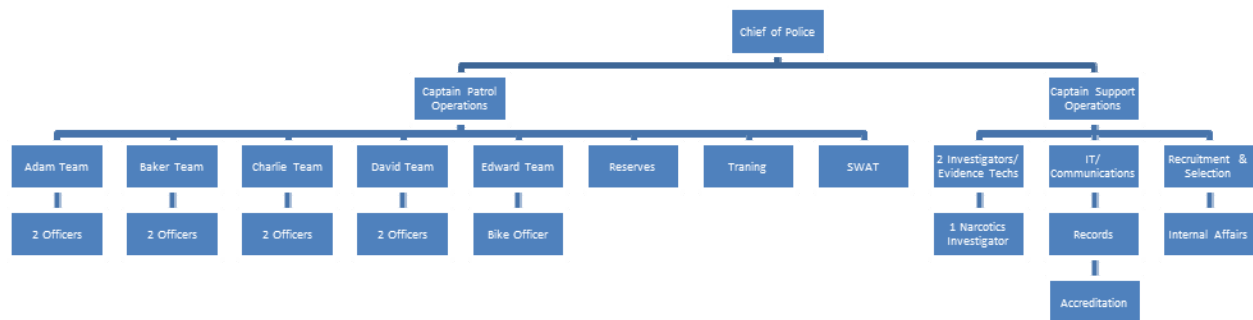
As a Law Enforcement Officer, my fundamental duty is to serve mankind; to safeguard lives and property; to protect the innocent against deception, the weak against oppression or intimidation, and the peaceful against violence or disorder; and to respect the Constitutional rights of all men to liberty, equality and justice.

I will keep my private life unsullied as an example to all; maintain courageous calm in the face of danger, scorn, or ridicule; develop self-restraint; and be constantly mindful of the welfare of others. Honest in thought and deed in both my personal and official life, I will be exemplary in obeying the laws of the land and the regulations of my department. Whatever I see or hear of a confidential nature or that is confided to me in my official capacity will be kept ever secret unless revelation is necessary in the performance of my duty.

I will never act officiously or permit personal feelings, prejudices, animosities, or friendships to influence my decisions. With no compromise for crime and with relentless prosecution of criminals, I will enforce the law courteously and appropriately without fear or favor, malice or ill will, never employing unnecessary force or violence and never accepting gratuities.

I recognize the badge of my office as a symbol of public faith, and I accept it as a public trust to be held so long as I am true to the ethics of the police service. I will constantly strive to achieve these objectives and ideals, dedicating myself before God to my chosen profession...law enforcement.

# 2015 Organizational Chart





## **CALEA**

CALEA is an acronym for the Commission on Accreditation for Law Enforcement Agencies, Inc. The purpose of this program is to improve the delivery of public safety services by maintaining a body of standards developed by public safety practitioners, establishing and maintaining an accreditation process, and recognizing professional excellence. The accreditation process involves a complete review of departmental standards and an inspection of compliance with those standards. The review is conducted by independent experts

in the field of law enforcement, who come from all over the United States. The auditors spend time with officers to ensure their understanding and knowledge of the CALEA process, and they also reach out to the community by allowing public comments on the quality of services provided by the Department.

CALEA is a departmental-wide function and is administered by the Support Operations Division Captain. Various compliance reports are assigned to different personnel within the department. Compliance reports include analyses, summaries, and evaluations that must be completed on a time sensitive schedule. The Support Operations Division Captain ensures that reports are completed and the Accreditation Manager maintains files of corresponding standards. Although CALEA requires a great deal of hard work on behalf of the Police Department and Town, it produces a number of benefits. Examples of benefits include international recognition, agency accountability, and professional excellence.

The Department was first awarded the CALEA accreditation on November 19, 2011. The Department went before the Commission and received reaccreditation at the CALEA conference in Albuquerque, New Mexico in November 2014.

## **Retirement**

On September 1, 2015, Chief Robert Bowlin retired after serving the Town of Wilkesboro for over 30 years. A retirement event was held at Wilkesboro Town Hall celebrating Chief Bowlin's career.



## **2015 Promotions**



In December 2015, Deputy Chief Craig Garriss was promoted to the rank of Chief of Police. Chief Garriss has been with the Wilkesboro Police Department since October 1997.

## **2015 New Officers**

The Wilkesboro Police Department hired two new officers in 2015. These officers were hired filling the vacancy left after Chief Robert Bowlin retired with 30 years of service. The position of Deputy Chief was transitioned into a Patrol Officer position.



Officer Donald Caudle came to the department in February 2015 after completing his Basic Law Enforcement Training Program at Wilkes Community College.



Officer Jaymie McHargue came to the department in November 2015 after completing her Basic Law Enforcement Training Program at Wilkes Community College.





## **Division Commander**

*Captain Jason Delbert*

## **Team Supervisors**

### ***Adam Team***

*Sgt. Nathan Wells*

### ***Baker Team***

*Sgt. Brian McManus*

### ***Charlie Team***

*Sgt. Craig Greer*

### ***David Team***

*Sgt. Ronnie Price*



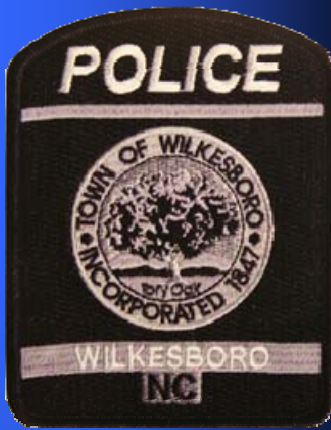
## **Patrol Operations Division**

The Patrol Division is commanded by Captain Jason Delbert and is the largest section in the agency. There are 14 full-time and 1 part-time sworn officers assigned to the patrol division. The officers are divided into four teams of three officers and one team of two. The four patrol teams each have a Sergeant. These teams work a rotating 12-hour schedule and they are the first staff members to respond to all crimes, including responding to 911 calls, calls for service, domestic disturbances and shopliftings. The Patrol Division operates under a patrol based investigation approach to all crimes. All personnel assigned to the Patrol Division are responsible for taking a proactive approach to partnerships, prevention and problem solving in the Wilkesboro Community.

In 2015, the Patrol Division responded to 8,911 calls for service and completed 1,465 Reports, 577 Crash Investigations and issued 1,549 Traffic Citations.



In 2015, the Wilkesboro Police Department received four dual antenna traffic radars and one Bosch crash data recorder from the North Carolina Governors Highway Safety Program. These items were received using points granted to the agency for participating in the North Carolina Governors Highway Safety Program.



### **Division Commander**

*Captain Tommy Rhodes*

### **Investigators**

*Inv. Chris Handy*

*Inv. Rocky Moore*

*Inv. Steve Rose*

*Inv. Chris Arnder*



## **Support Operations Division**

The Support Operations Division is commanded by Captain Tommy Rhodes and is staffed by four Investigators. Three of these investigators are assigned to handle felony crimes including homicide, rape, robbery, theft and fraud cases. One investigator is assigned to investigate drugs and vice cases. The investigators employ a team approach to major crime investigations, where multiple investigators are assigned to all major crimes such as a homicide, robbery and missing person cases. This division is also responsible for several other duties within the department to include; Evidence and Property Management, Quartermaster, Recruitment and Selection, Background Investigations and Law Enforcement Accreditation.

Two Investigators are trained in Crime Scene Investigation which allows the department to process most crime scenes without calling for assistance from outside agencies.



In 2015, the department had its first Homicide in four years. During the investigation the incident ended up being a Double Homicide in which three people were charged and arrested five days later. In 2015, the

agency recovered and or seized property valued at \$101,263.35. These items included eight automobiles valued at \$62,150, five firearms and jewelry valued at \$18,196.

# ANNUAL REVIEW



# AND ANALYSIS

## **Response to Aggression**

Because the application of force on an individual by a police officer is subject to close scrutiny by society the Wilkesboro Police Department investigates all incidents involving officers where some type of response was used on an individual. All responses must be reasonable and necessary. Each response to aggression incident is reviewed by the Division Commander and then by the Senior Command staff for compliance with policy and reasonableness of the response used.

During 2015, Wilkesboro Police Department Officers were involved in 14 Response to Aggression incidents. All were reviewed and only one was found to be in violation of departmental policy. Below is a listing of the incidents for the last three years.

<b>Shift</b>	<b>2013</b>	<b>2014</b>	<b>2015</b>
<b>Day (0700-1900)</b>	<b>12</b>	<b>6</b>	<b>4</b>
<b>Night (1900-0700)</b>	<b>11</b>	<b>11</b>	<b>10</b>
<b>Division</b>			
<b>Patrol</b>	<b>23</b>	<b>17</b>	<b>14</b>
<b>Support</b>	<b>0</b>	<b>0</b>	<b>0</b>
<b>Suspect Activity</b>			
<b>Assaultive</b>	<b>1</b>	<b>1</b>	<b>2</b>
<b>Non-Compliant</b>	<b>9</b>	<b>10</b>	<b>6</b>
<b>Running/Evading</b>	<b>4</b>	<b>3</b>	<b>1</b>
<b>Fighting</b>	<b>1</b>	<b>0</b>	<b>0</b>
<b>Known Threat/Felony Stop</b>	<b>7</b>	<b>2</b>	<b>5</b>
<b>Weapon Found on Suspect</b>	<b>1</b>	<b>1</b>	<b>0</b>
<b>Officer Response</b>			
<b>Firearm (Drawn)</b>	<b>9</b>	<b>6</b>	<b>6</b>
<b>Firearm (Fired)</b>	<b>0</b>	<b>0</b>	<b>1</b>
<b>Hands</b>	<b>8</b>	<b>6</b>	<b>2</b>
<b>Taser</b>	<b>5</b>	<b>4</b>	<b>5</b>
<b>Pepper Spray</b>	<b>1</b>	<b>1</b>	<b>0</b>
<b>Response by Race</b>			
<b>White</b>	<b>16</b>	<b>12</b>	<b>13</b>
<b>Black</b>	<b>6</b>	<b>5</b>	<b>1</b>
<b>Other</b>	<b>1</b>	<b>0</b>	<b>0</b>
<b>Response by Sex</b>			
<b>Male</b>	<b>18</b>	<b>14</b>	<b>10</b>
<b>Female</b>	<b>5</b>	<b>3</b>	<b>4</b>
<b>Totals</b>	<b>23</b>	<b>17</b>	<b>14</b>

## **Internal Affairs/Complaints**

The Wilkesboro Police Department investigates all complaints received by the agency. Complaints may be received in writing, in person, by telephone, by email; anonymous complaints are accepted. The preferred method is in writing on a *Citizen Complaint Form*.

The agency uses a two-tiered investigative system that involves the First Line Supervisors for minor complaints that may be a misunderstanding of policy or procedures and a formal investigation for more serious complaints. All officers assigned to internal investigations have specialized training in internal investigative affairs. The Chief of Police assigns all complaints to either a First Line Supervisor, Division Commander or to Internal Affairs for a complete investigation.

The agency investigated five complaints filed in 2015 on employees of the Wilkesboro Police Department. Of the complaints all were on full-time officers from the Patrol Operations Division. All of the complaints were received from citizen/officer encounters. Below is a breakdown of the complaints:

<b>Complaint Origin</b>	<b>2013</b>	<b>2014</b>	<b>2015</b>
<b>Citizen</b>	<b>3</b>	<b>1</b>	<b>5</b>
<b>Internal</b>	<b>2</b>	<b>1</b>	<b>0</b>
<b>Originating Action</b>			
<b>Traffic Stop</b>	<b>2</b>	<b>0</b>	<b>0</b>
<b>Arrest</b>	<b>0</b>	<b>1</b>	<b>1</b>
<b>Officers Conduct</b>	<b>3</b>	<b>1</b>	<b>4</b>
<b>Disposition</b>			
<b>Sustained</b>	<b>2</b>	<b>1</b>	<b>1</b>
<b>Not Sustained</b>	<b>1</b>	<b>0</b>	<b>0</b>
<b>Unfounded</b>	<b>0</b>	<b>0</b>	<b>3</b>
<b>Exonerated</b>	<b>2</b>	<b>1</b>	<b>1</b>

### **Definitions**

**Sustained-** The allegation is supported by sufficient evidence to believe the incident complained of occurred

**Not Sustained-** Investigation discloses insufficient evidence either to prove or disprove the allegation

**Unfounded-** The investigation disclosed that the act complained of never occurred and therefore is false

**Exonerated-** The incident complained of occurred; however, the actions of the staff member were lawful and proper

## **Vehicle Pursuits**

During 2015, the Wilkesboro Police Department had five Motor Vehicle Pursuits. In 2014, the agency had two Motor Vehicle Pursuits. Of the five pursuits in 2015 only one occurred during day shift and four occurred during night shift. The average duration of the pursuits was 1.8 minutes. The average distance the pursuits covered was 1.12 miles. The longest pursuit traveled 2.5 miles and lasted four minutes. The pursuits were



initiated due to a variety of driving behaviors to include Careless and Reckless Driving, Aggressive Driving, Prearranged Racing and Stop Sign Violations. A total of twenty four charges were filed in 2015 involving police pursuits. One pursuit was terminated due to the reason of the pursuit. One pursuit resulted in the suspect being involved in a single vehicle crash. When the suspect was attempting to elude the officer he struck a utility pole. The suspect received minor injuries and refused medical treatment.

# Performance



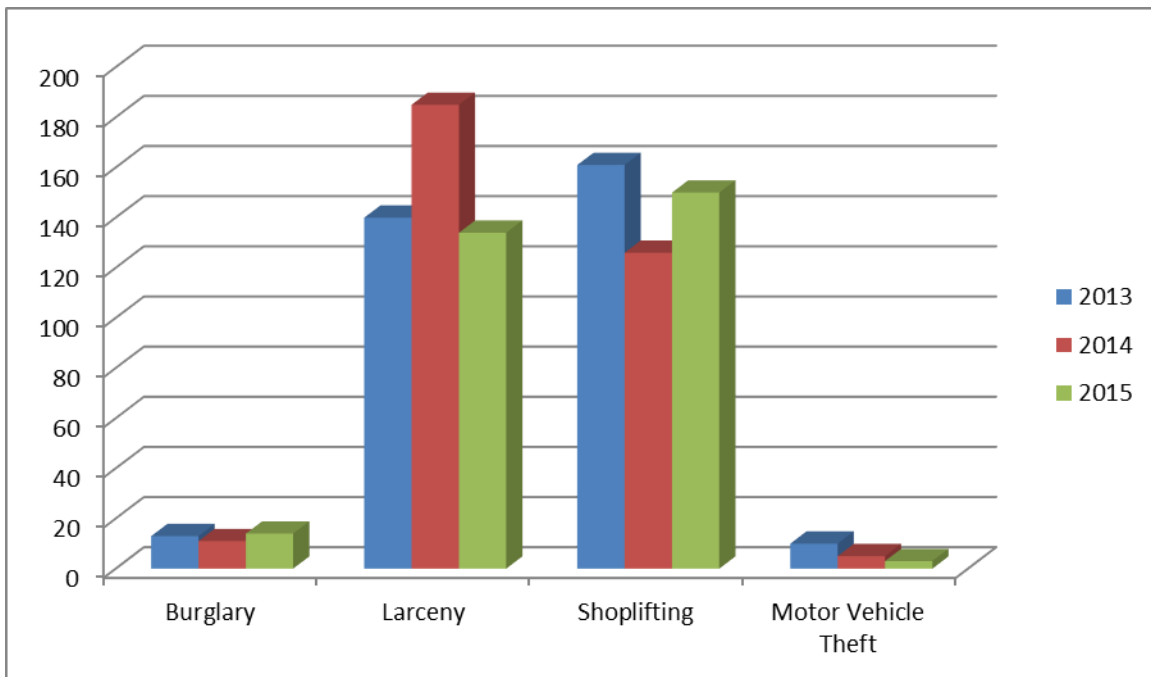
# Reports



## Crime Index

On a monthly basis, the Wilkesboro Police Department sends crime statistics to the North Carolina State Bureau of Investigation (SBI) Research and Planning Division. The SBI and FBI compile the data at the state and national levels into the Uniform Crime Reporting Program (UCR). The UCR program is based on a crime index. The Crime Index consists of seven major crimes selected for their serious nature, their frequency of occurrence and on the reliability of reporting from citizens to law enforcement agencies. The Crime Index includes the violent crimes of homicide, rape, robbery and aggressive assault; and the property crimes of burglary, larceny and motor vehicle theft. The Crime Index is used when comparing crime rates and statistics for various cities, towns and counties across the United States.

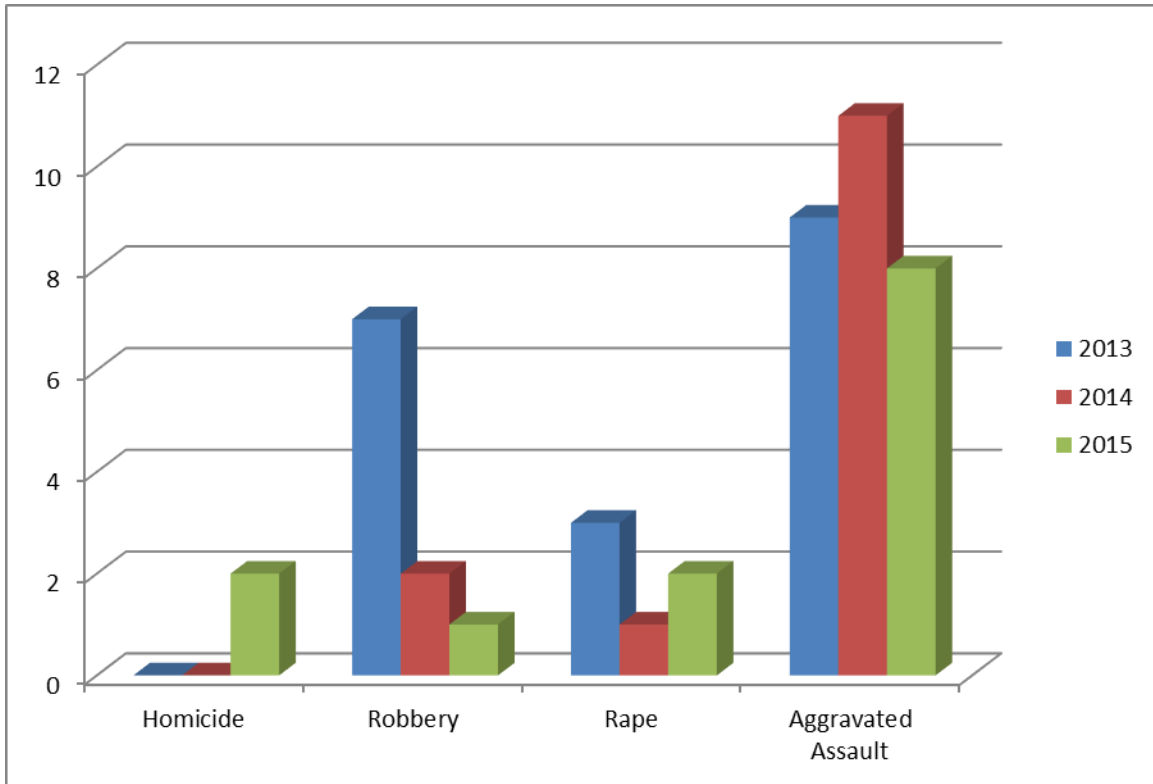
### Crime Index - Property Crimes



The agency had a decrease in two areas of Property Index-Crimes (Larceny and Motor Vehicle Theft). The number of Shoplifting Reports increased by 24 incidents in 2015.



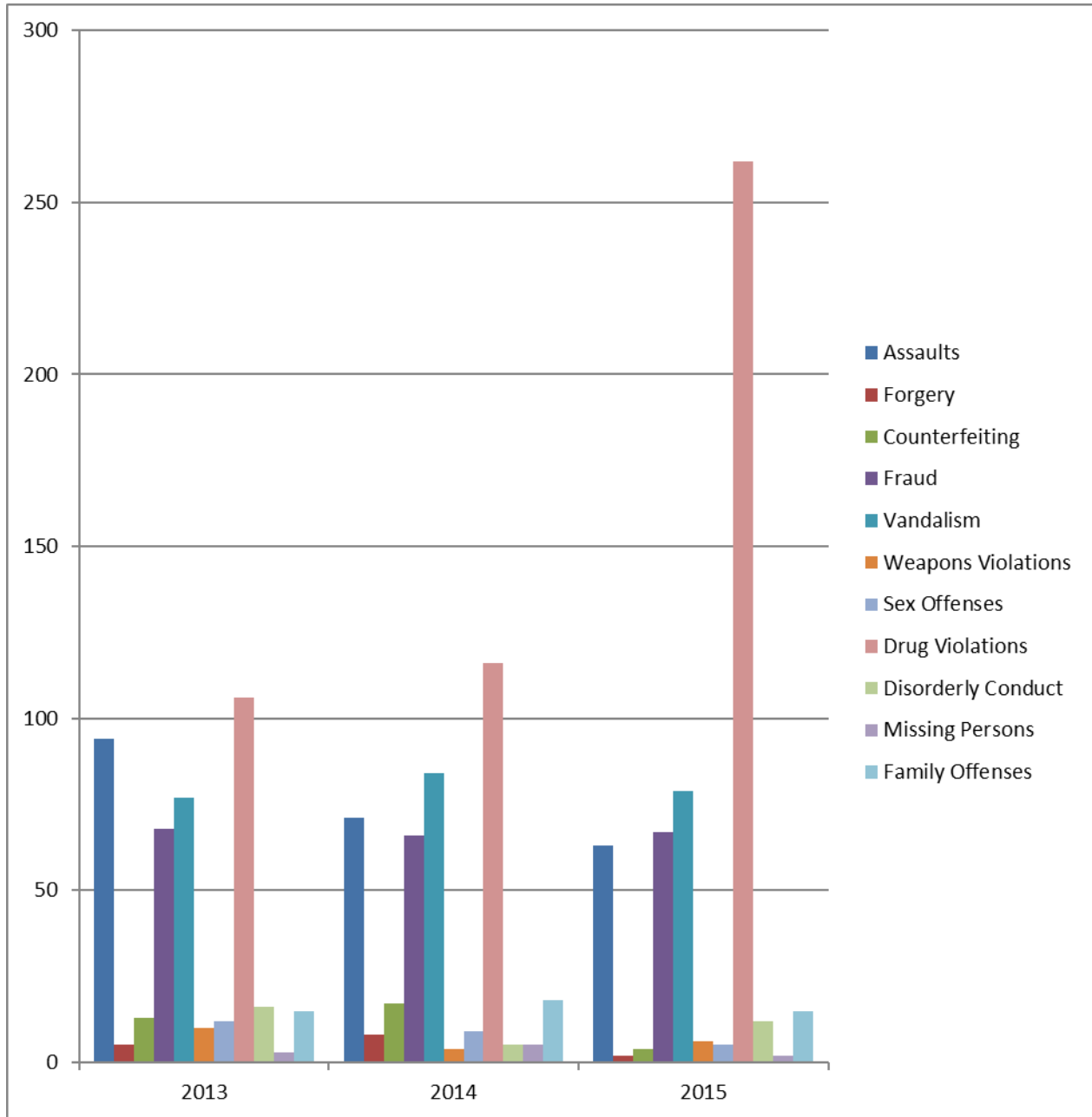
## Crime Index - Violent Crimes



In September 2015, the Wilkesboro Police Department investigated a Double Homicide. In 2015, the department had three (3) less Aggravated Assault Incidents than the previous year.

## Non-Index Crimes

The Non-Index crimes are crimes that consist of non-physical confrontation or incidents reported that are not considered to be life threatening. These crimes are taken seriously as many times they are an indication of the quality of life in a community.



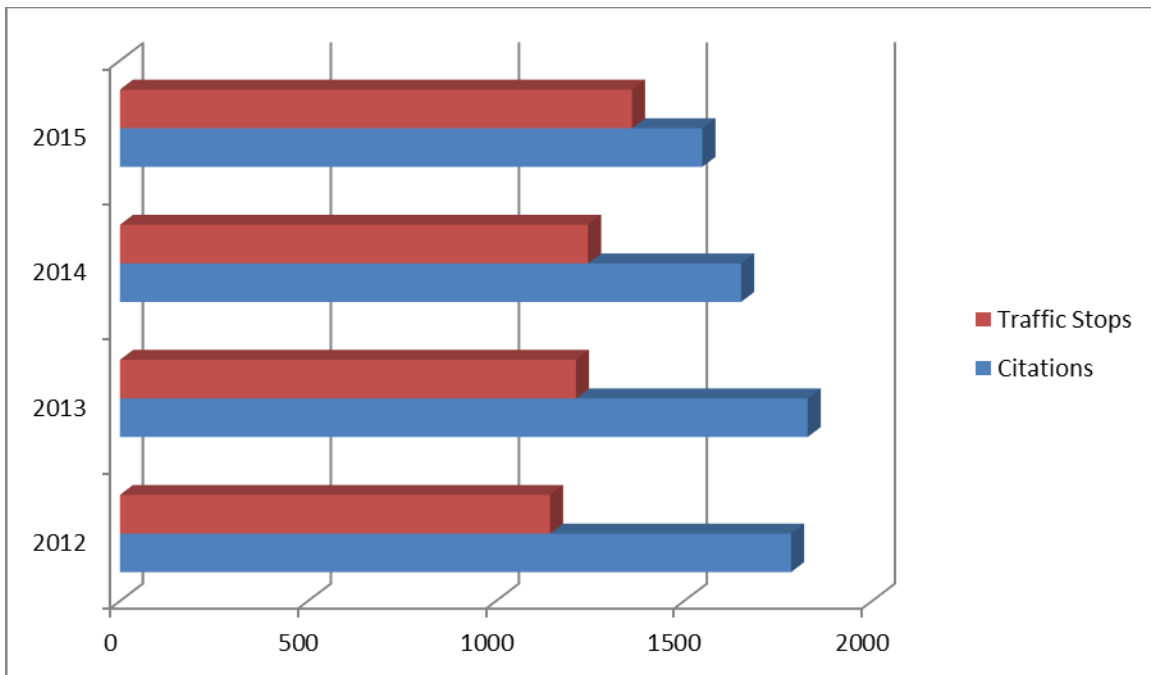
The most notable Non-Index Crime statistic in 2015 was the Drug Violation Incidents. During 2015, officers were proactive during vehicle stops observing possible drug offenders. The

agencies Narcotic Investigator also generated several more drug cases which resulted in several charges.

## **Traffic Data**

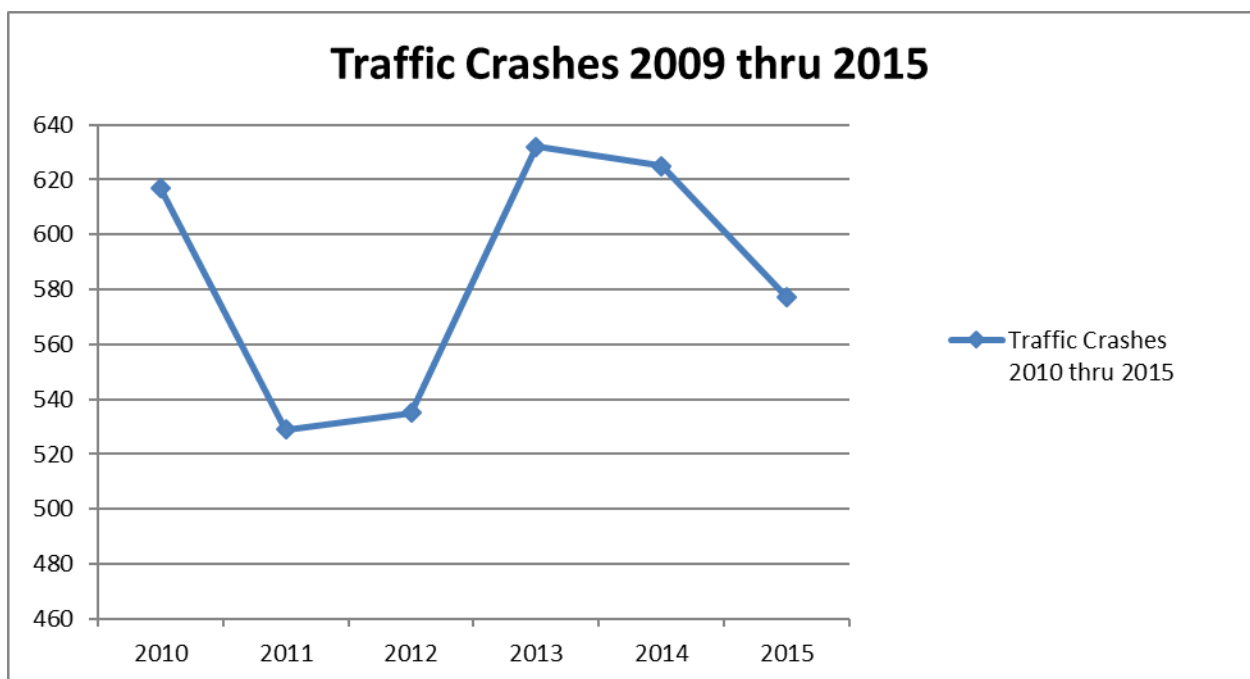
### **Citations**

Citations differ from arrests in law enforcement reporting. Citations are primarily issued to offenders charged with infractions or minor misdemeanors that do not require the signing or the posting of a bond (waivable offenses). Citations are written for traffic violations, violation of ABC Laws, violations of the Town Ordinances and other minor violations that are not included in the UCR totals for a given year. In 2015, officers of the Wilkesboro Police Department issued 1,549 citations and conducted 1362 traffic stops.



## **Traffic Crashes**

In 2015, officers of the Wilkesboro Police Department investigated 577 traffic crashes, with two fatal crashes. In 2014, officers of the Wilkesboro Police Department investigated 625 traffic crashes with no fatal crashes. This is a decrease of 48 crashes from the previous year. Both fatal crashes in 2015 were on US Hwy 421 which is an area of our larger businesses.



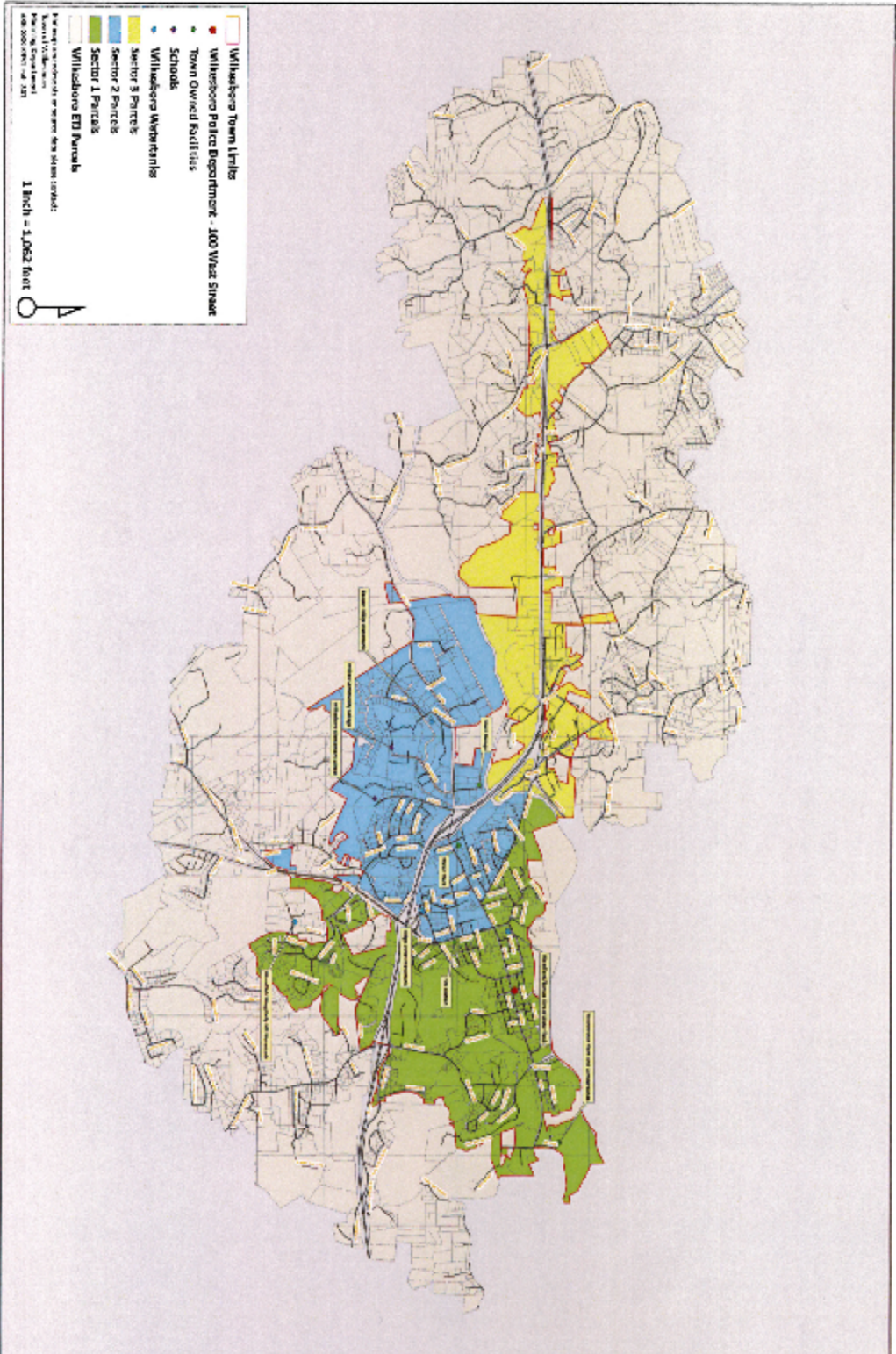


**POLICE DEPARTMENT**  
*Protecting the Community*  
Service • Accountability • Professionalism • Integrity • Dedication

## Wilkesboro Police Department Patrol Sector Map



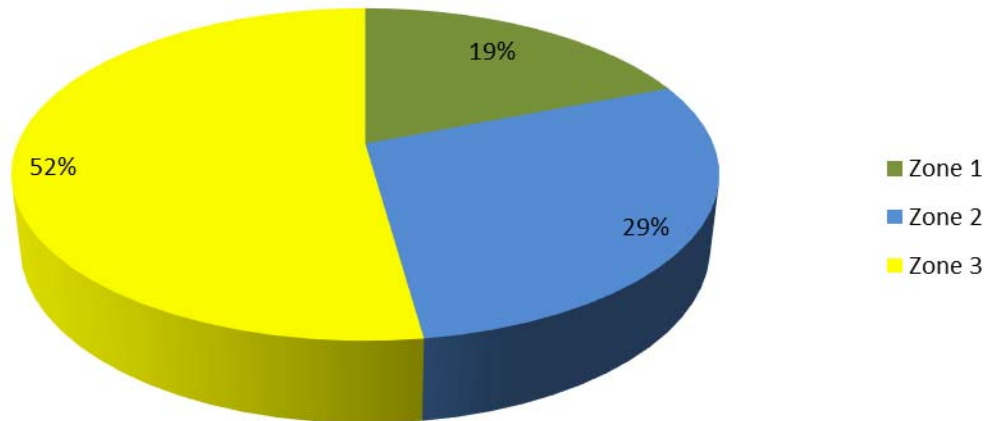
North Carolina  
JAN 2023



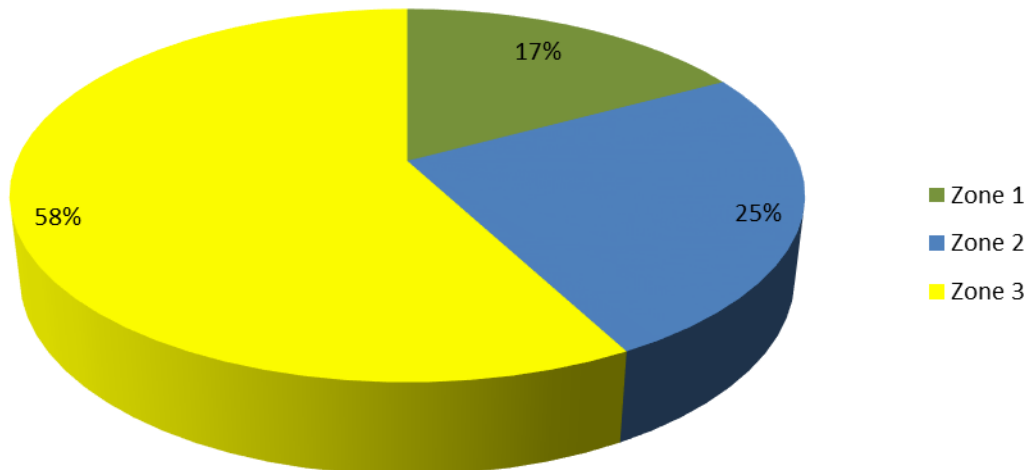
### Crashes by Area

To provide better coverage of the city the Wilkesboro Police Department has divided the city into three zones. Zone 1 consists of the East side of the city which is from NC Hwy 16 South and Cherry Street, East to the city limits. Zone 2 consists of the middle section of the city which contains River Street, NC Hwy 268 West, Curtis Bridge Road and US Hwy 421 Business. Zone 3 consists of the West side of the city which is the US Hwy 421 area. This area contains a lot of the retail stores in the city.

**2014 Crashes by Area**

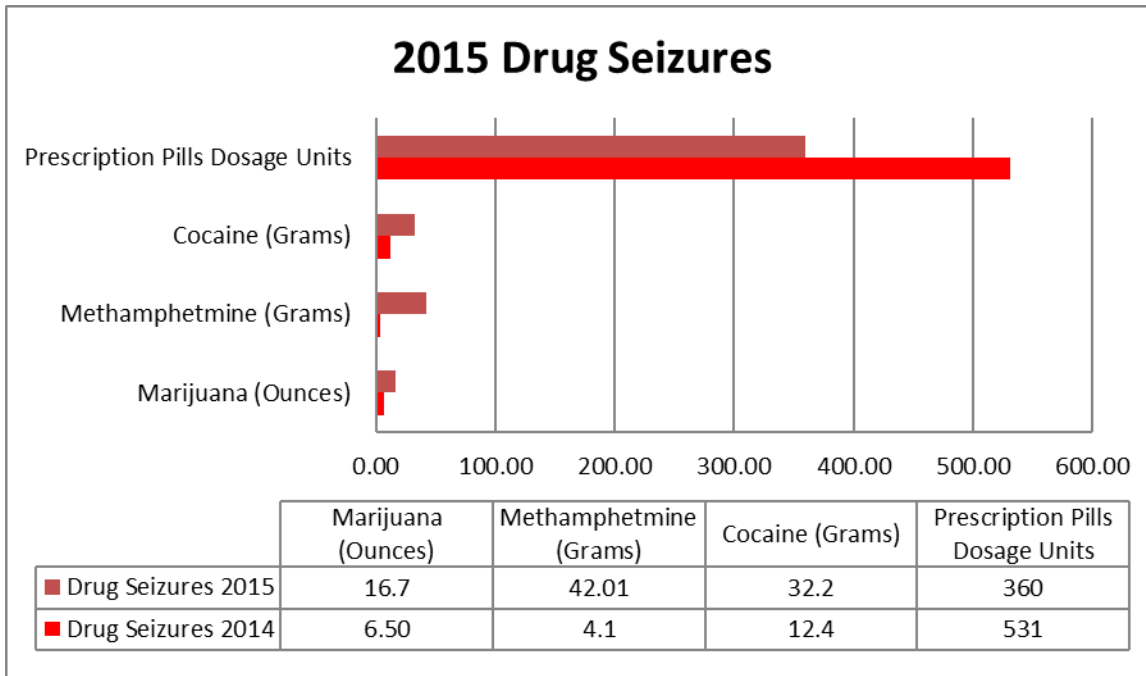


**2015 Crashes by Area**





# Illegal Drug Summary Report



During 2015, the agency seized \$6,809.75 in cash and narcotics from a total of 88 drug related arrest with 113 drug related charges. Officers responded to 132 incidents involving controlled substances. These incidents involved suspects found to be in possession of controlled substances, controlled substances found by citizens and controlled substances stolen from citizens.



**In 2015, the agency seized 42.01 grams of Methamphetamine which was 37.91 grams more than in 2014.**

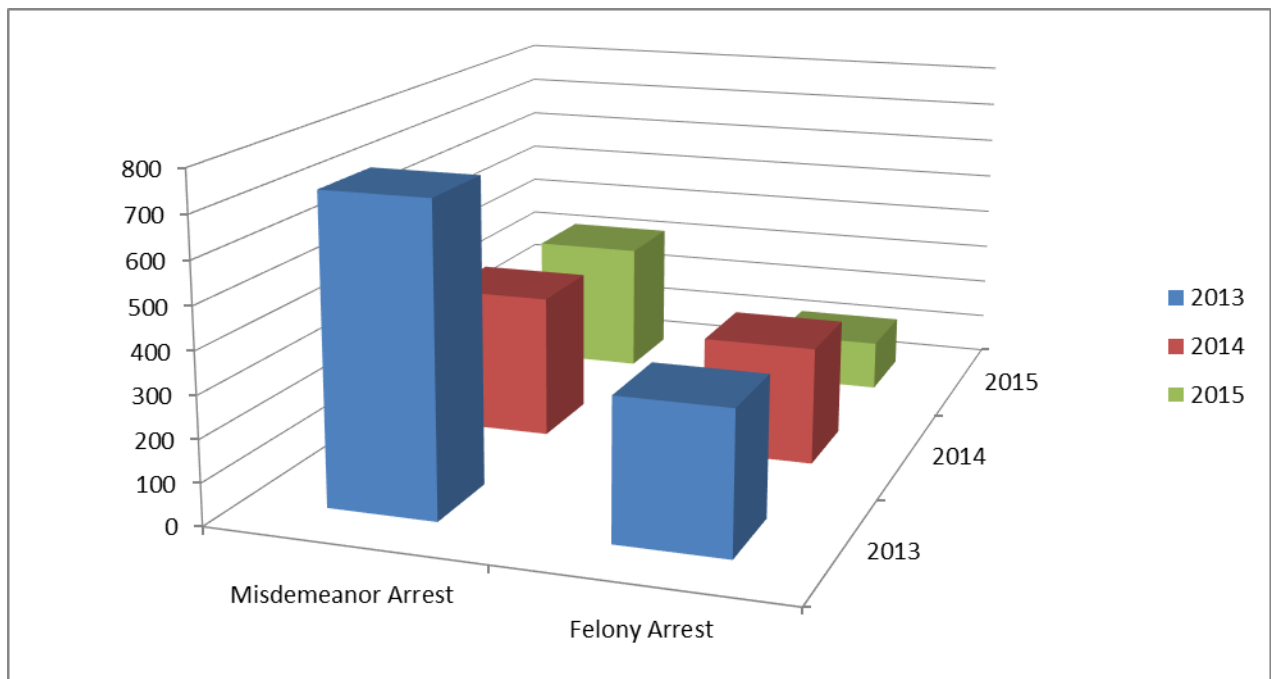
## Arrest Data

### Misdemeanor Arrest Charges

In 2015, the Wilkesboro Police Department made 501 Misdemeanor Arrest Charges and made 320 Misdemeanor Arrest.

### Felony Arrest Charges

In 2015, the Wilkesboro Police Department made 308 Felony Arrest Charges and made 121 Felony Arrest.





## **Wilkesboro Police Department Training**

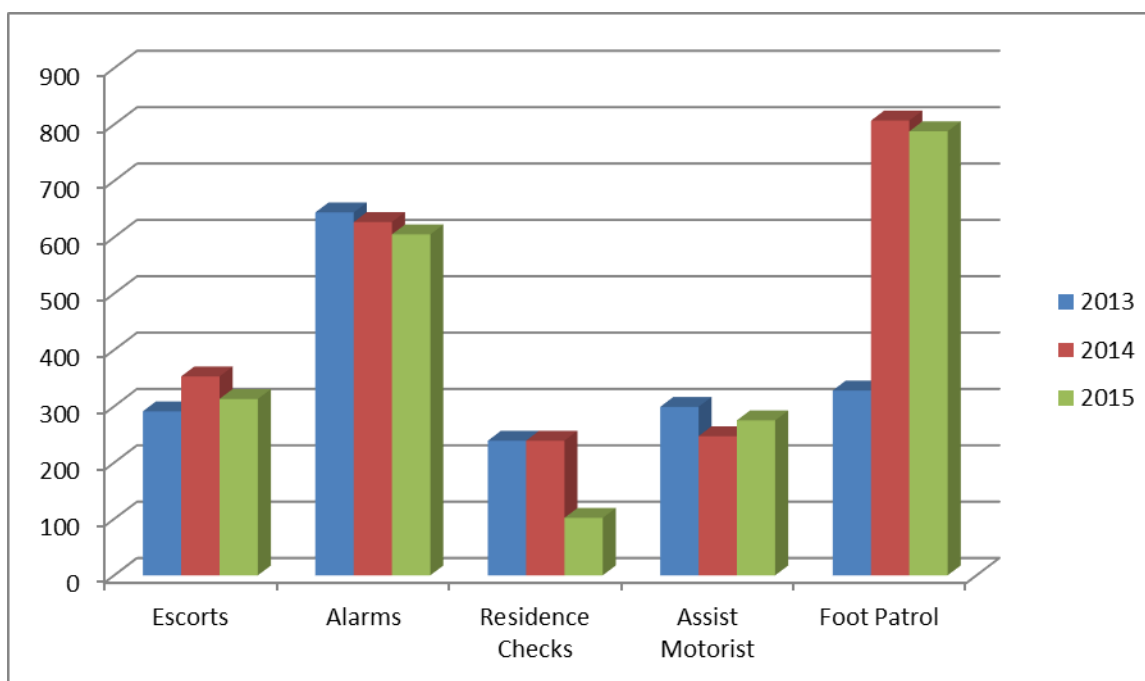
In 2015 all officers within the department completed 44 hours of In-Service Training. Of those 44 hours, 24 hours are mandated by the State of North Carolina Training and Standards Commission. The additional 20 hours of in-service training is mandated by the department. Members of the department also attended 1,359 hours of additional training throughout the year. The department sent officers to 152 hours of officer safety courses, 160 hours of specialized crash investigation course, 128 hours of leadership courses. Every year officers receive an eight hour block of



instruction on Law Enforcement Driver Training. Two (2) officers received their Advanced Law Enforcement Certificates in 2015. The department also sent officers to several conferences including the North Carolina Police Executives Association, Southern Software Conference, Governors Highway Safety Conference, North Carolina SWAT Conference, and Management Development Conference. All other training hours were devoted to recertification's.

## Community Service

The Wilkesboro Police Department has maintained the community service philosophy during 2015. With community service in mind, every police officer is encouraged to interact with the public during their shifts. These activities have included vacation/residence checks, funeral and business escorts, responding to alarms and emphasis patrols in addition to the daily community policing contacts in retail and residential areas of the town.



## **2015 North Carolina Torch Run for Special Olympics**

In May 2015, officers of the Wilkesboro Police Department participated in the North Carolina Torch Run for Special Olympics. The run started at Wilkes Community College and traveled through downtown Wilkesboro and North Wilkesboro ending at West Park in North Wilkesboro. Officers of the Wilkesboro Police Department have carried the torch through the two towns for many years. Often runners are joined by Special Olympians for portions of the run.



## **Halloween Fun Walk**

The Wilkesboro Police Department participated in the Halloween Fun Walk in North Wilkesboro on the Yadkin Greenway. This event is designed to give kids a safe alternative for Trick or Treating. The police department purchased bags of candy and passed them out during the event. Each year the event hosts approximately 3,000 kids.



## **SAFE Spot Child Advocacy Center**

SAFE Spot is a place that delivers comprehensive, community-based services to children and families affected by sexual abuse or severe physical abuse. The center currently provides forensic interviews, victim advocacy and case coordination services. Captain Tommy Rhodes participates in

multidisciplinary team meetings along with representatives from the Wilkes Department of Social Services, law enforcement, mental health, Guardian Ad Litem, District Attorney's Office and the public school system to discuss cases.



## **Operation Christmas Cheer**

For several years the Wilkesboro Police Department has conducted Operation Christmas Cheer. This program was developed to assist citizens in Wilkesboro by delivering food boxes to them. Every year, the program has been funded by donations from Kulynych Family Foundation One, Wilkesboro Business and Professional Club, Cook Family and the Town of Wilkesboro. In 2015, Officers, members of the Town Council and Town Hall employee's built fifteen food boxes. After the boxes were completed they were delivered to citizens of Wilkesboro. The requests for the food boxes were significantly down in 2015 from previous years. As a result the police department purchased fifty gas cards and conducted random vehicle stops on people observed obeying seatbelt laws, child restraint laws, stop signs and safe driving. When the officers made contact with the citizen they were told why they were stopped and presented with the gas card. This program proved to be a great success.

